

Gauge Isolator Valve
Series WM 1*

Characteristics

General

The gauge isolator valve protects the gauge against damage from pressure surges.

Function

As soon as the button is released the valve automatically bypasses the fluid to the reservoir. This maintains the pressure gauge accuracy and prolongs its life expectancy.

Features

WM1A1

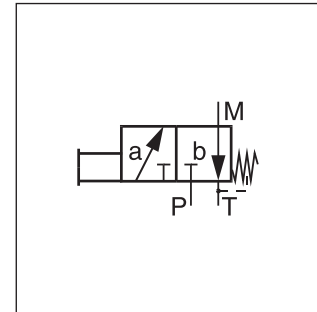
- Protects the manometer from pressure shocks
- Pipeline installation

WM1-06A1

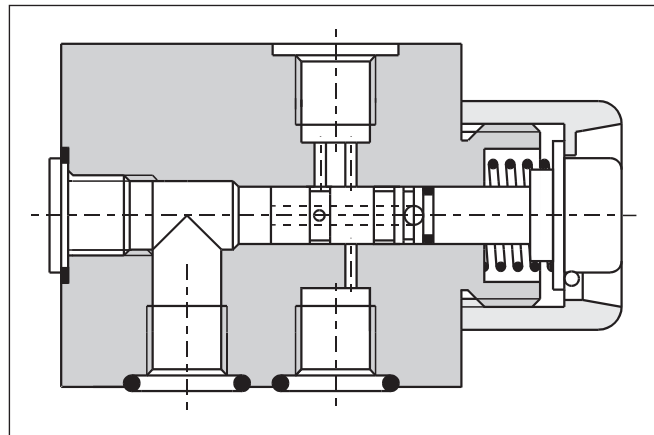
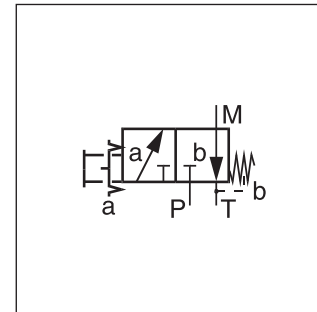
- Protects the manometer from pressure shocks
- Lockable
- Switch box installation, manifold mounting, panel mounting



WM1 A1



WM1-06 A1



WM1-06 A1

8

Technical data

Code	WM1 A1	WM1-06 A1
Design	protective valve with knurled knob, body made of casting steel, pipeline installation	protective valve for switch box installation, manifold mounting, control plate mounting
Connections	G1/4	
Operation	by hand	by hand
Mounting position	unrestricted	unrestricted
Weight [kg]	0.36	1.4
Working pressure [bar]	max. 350	max. 315

Ordering codes

WM 1 A 1

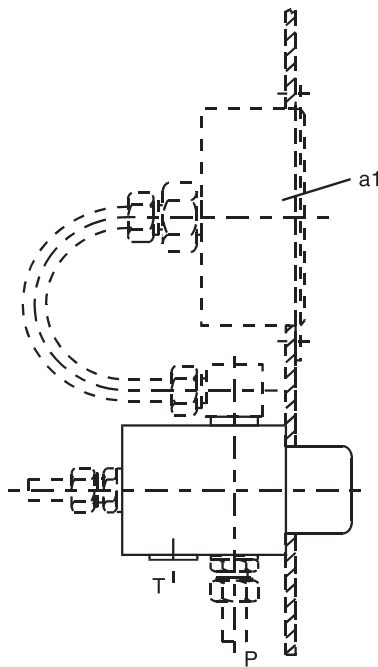
Manometer
shut-off
valve

WM 1-06 A1

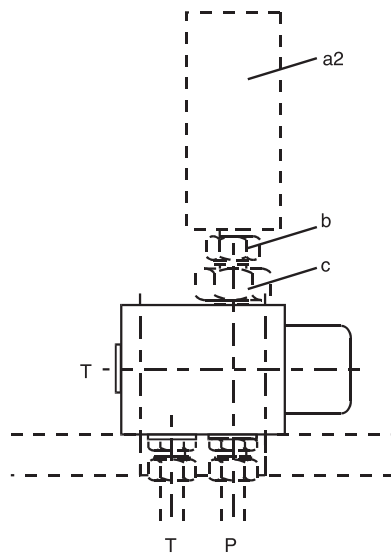
Manometer
shut-off
valve

Bold letters =
Short-term availability

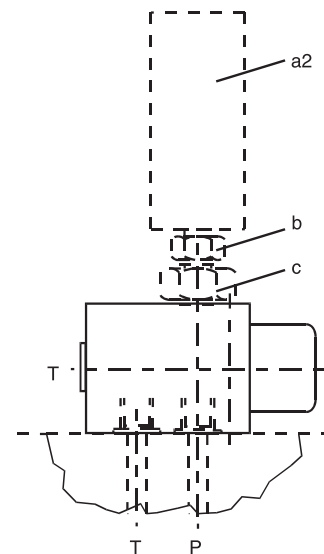
Installation examples WM 1-06 A1



Switch box installation



Manifold mounting
(lined)

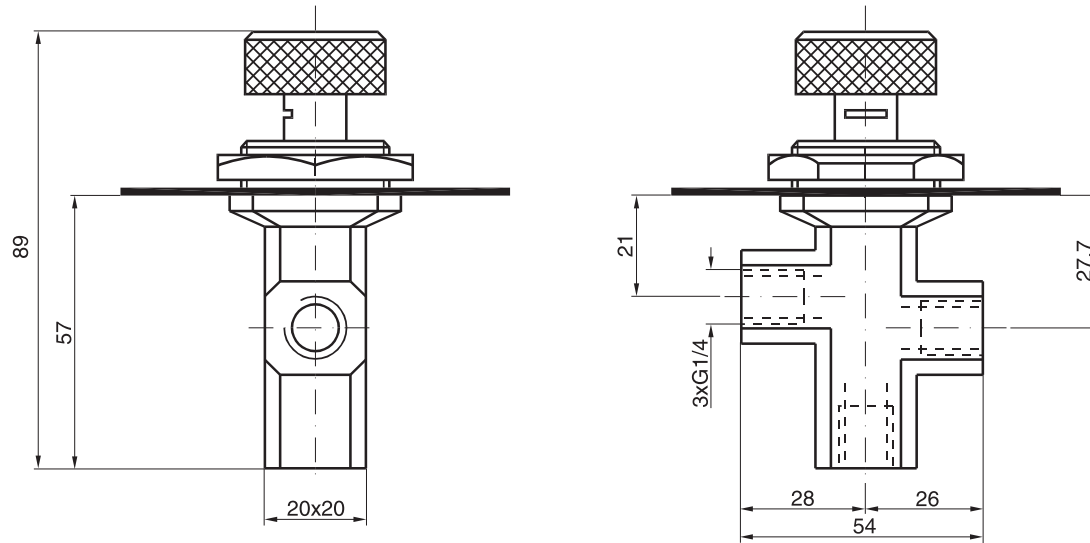


Panel mounting
(O-ring seal)

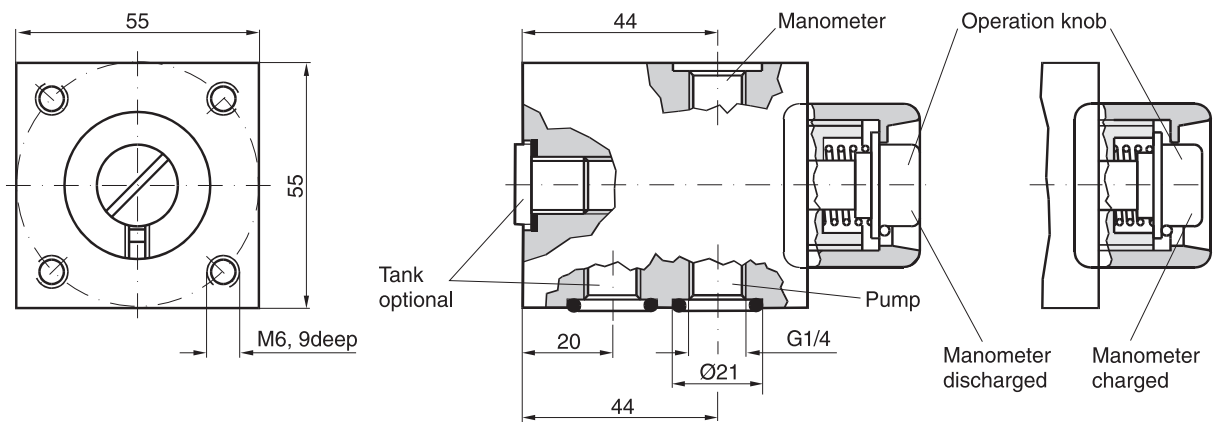
- a1 - Manometer as per DIN 18063 form G or L
- a2 - Manometer as per DIN 18063 form A
- b - MAVE08SRA3C
- c - GE08SREDOMDA3C

8

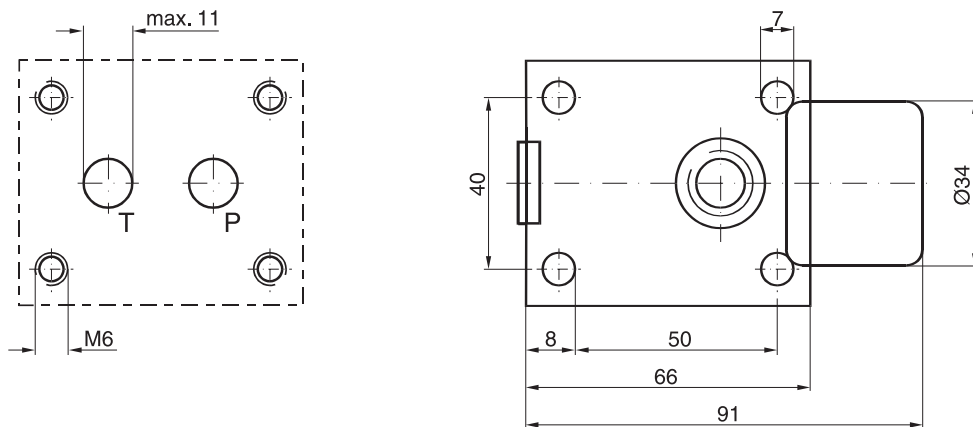
WM 1 A 1



WM 1-06 A1



Mounting pattern



WM1.PMD CM



